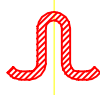




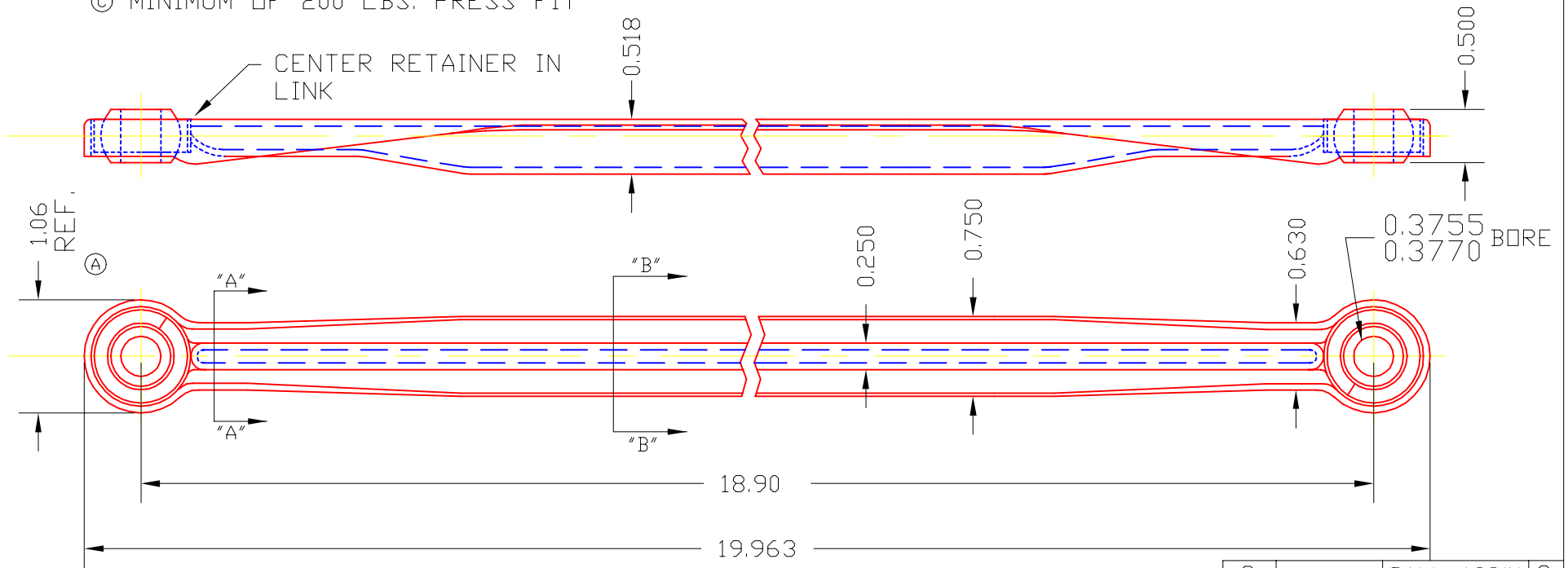
SECTION "A-A"



SECTION "B-B"

STAMP TRIANGLE MFG. CO.  
OSHKOSH WIS.

© MINIMUM OF 200 LBS. PRESS FIT



NOTE: BALL FIT <sup>®</sup>  
 MIN. END PLAY-BALLS MUST BE  
 ABLE TO ALIGNED W/OUT TOOLS.  
 .008" MAX. END PLAY  
 12 IN.\LBS. ALIGN. TORQUE

CHANGE LEVEL  
 C 06-02-99

2	HB1206-22	BALL ASS'Y	2
1	LW6865	LINK	1
DET	PART NUMBER	DESCRIPTION	AMT
B	TRIANGLE MANUFACTURING CO. OSHKOSH, WI.		
NAME		LINK	
PLATING		NONE	
USED IN		////	
DATE		06-04-91	PART NO.
MATERIAL		SEE DET.	LW6862
DRAWN		SP	
CHECKED		SP	
ALL DIMS ±.020 UNLESS SPECIFIED		SCALE	1 / 1