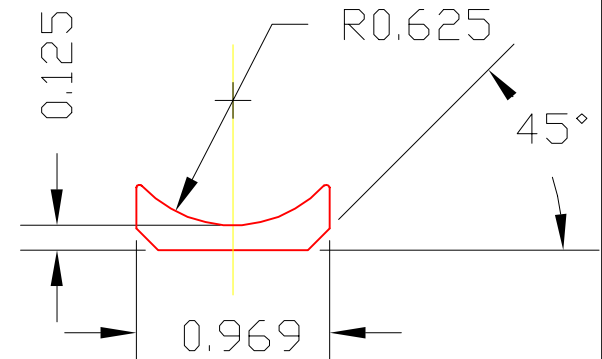
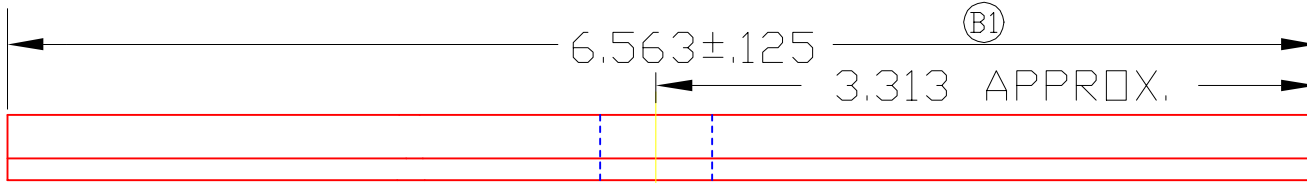
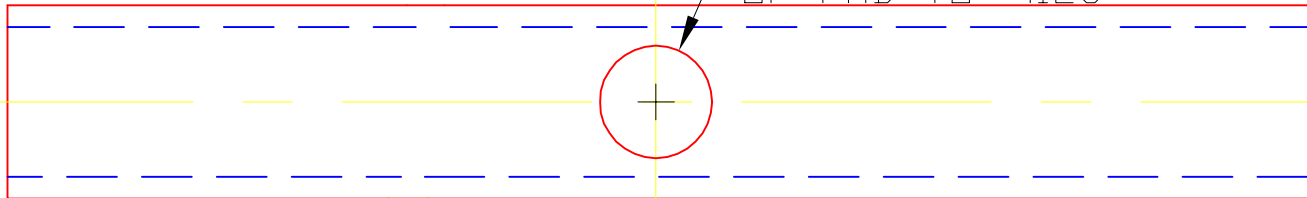


4707

ALL TOLERANCES PER RMA CLASS-2

ⓑ NOTE - THE HOLE NEED NOT STAY ROUND

Ø0.563-ONE HOLE LOCATED IN CENTER OF PAD TO ±.125



*MAT'L-CLOSED-CELL SPONGE RUBBER #SCE-43 (NEOPRENE) WITH ELECTRICAL TO LIGHT A STANDARD NEON TEST LAMP

ⓓ ⓐ

1	4590	CUSHION	1
DET	PART NUMBER	DESCRIPTION	AMT
A TRIANGLE MANUFACTURING CO. OSHKOSH, WI.			
NAME CUSHION			
USED IN 2" DIA. BALLS			
DATE	5-27-74	PART NO.	
DRAWN	LML	4707	
CHECKED	MJK		
SCALE	1 / 1		

FIT	////
PLATING	////
MATERIAL	SEE NOTE*
ALL DIMS ±.02 UNLESS SPECIFIED	

CHANGE LEVEL
D 07-09-96