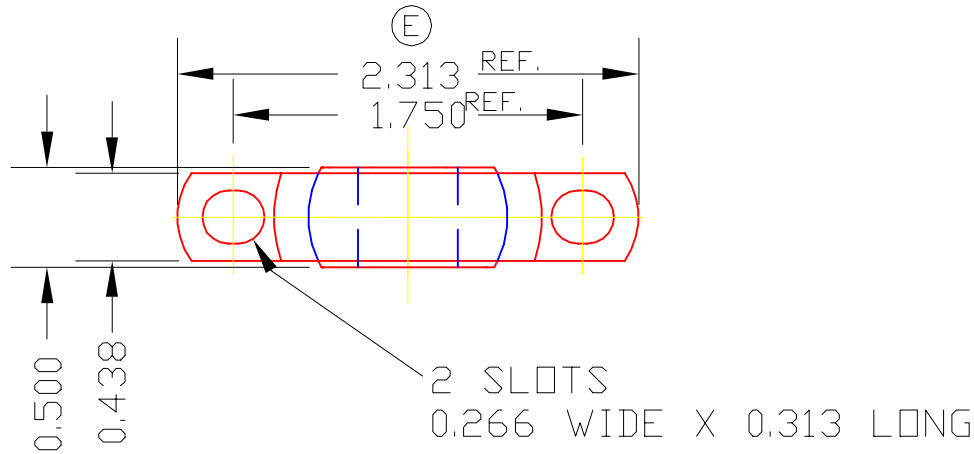
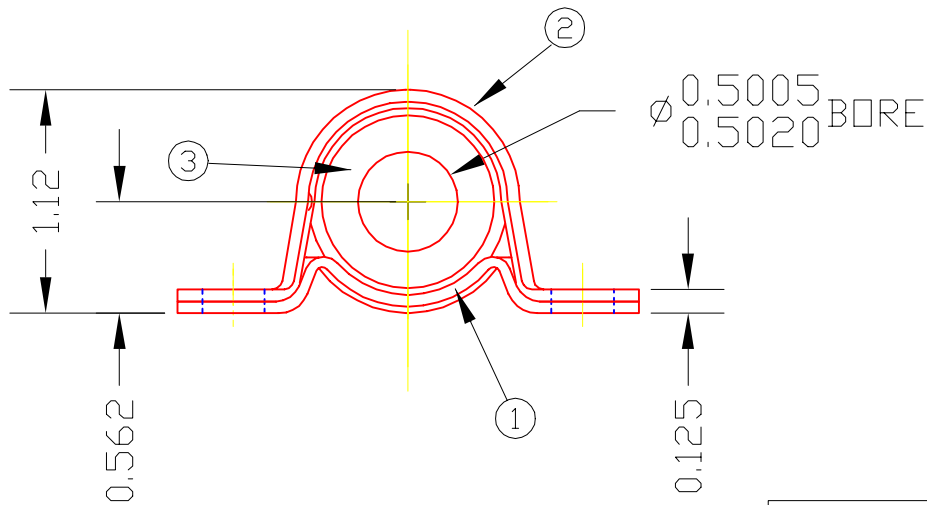


BD1508P

NOTE: ASSEMBLY TO FIT GAGE THAT HAS
.250 DIA. PINS ON 1.750±.001 CENTERS,
WITH BALL IN MOUNTING PAN-4006



SLOTS IN BASE & CONTAINER MAY
HAVE SLIGHT MISALIGNMENT IN THE
LONG DIRECTION. (D)



3	1508P	BALL ASS'Y	1
2	3688	STRAP	1
1	3687	BASE	1

DET	PART NUMBER	DESCRIPTION	AMT
-----	-------------	-------------	-----

A TRIANGLE MANUFACTURING CO.
OSHKOSH, WI.

NAME PILLOW BLOCK BEARING

USED IN ////

DATE 2-5-70 PART NO.

DRAWN BW-88

CHECKED MJK

SCALE 1 / 1

FIT	////
PLATING	GALV
MATERIAL	GALV. S. & SINT. IRON
ALL DIMS.	±.020 UNLESS OTHERWISE SPECIFIED

BD1508P

CHANGE LEVEL	
E	07-07-03