

K22G

SPH. DIA.

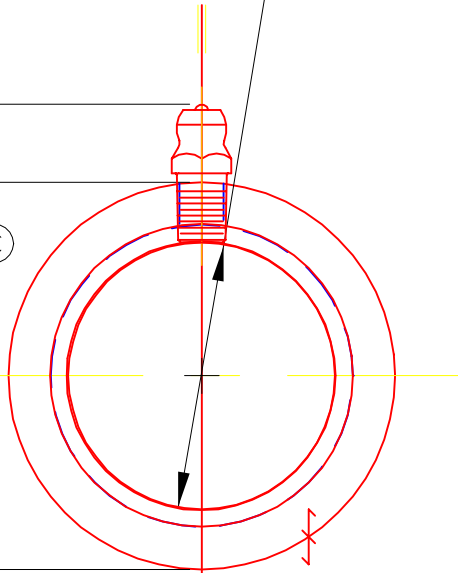
TURN

2.002
2.000
2.375

©

"A"

Ø 1.377
1.379 REAM

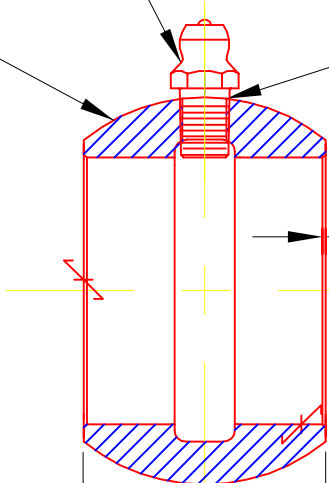


"A"

②

①

#1 DRILL - THRU ONE HOLE



0.016 X 45° CHAMFER
BOTH ENDS

SECTION A-A

0.625

1.250

2	1650	FITTING	1
1	K22H	CASTING	1
DET	PART NUMBER	DESCRIPTION	AMT

▲ TRIANGLE MANUFACTURING CO.
OSHKOSH, WI.

NAME BRG. BALL - CAST IRON

USED IN K BALL

DATE 6-11-63

PART NO.

FIT ////

PLATING ////

MATERIAL SEE DET.

ALL DIMS. ±.020 UNLESS OTHERWISE SPECIFIED

DRAWN BW-88

CHECKED STEVE

SCALE 1 / 1

K22G

CHANGE LEVEL	
C	6-14-88