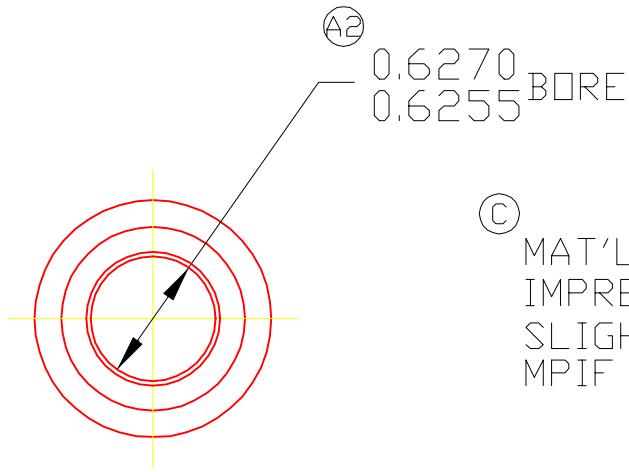
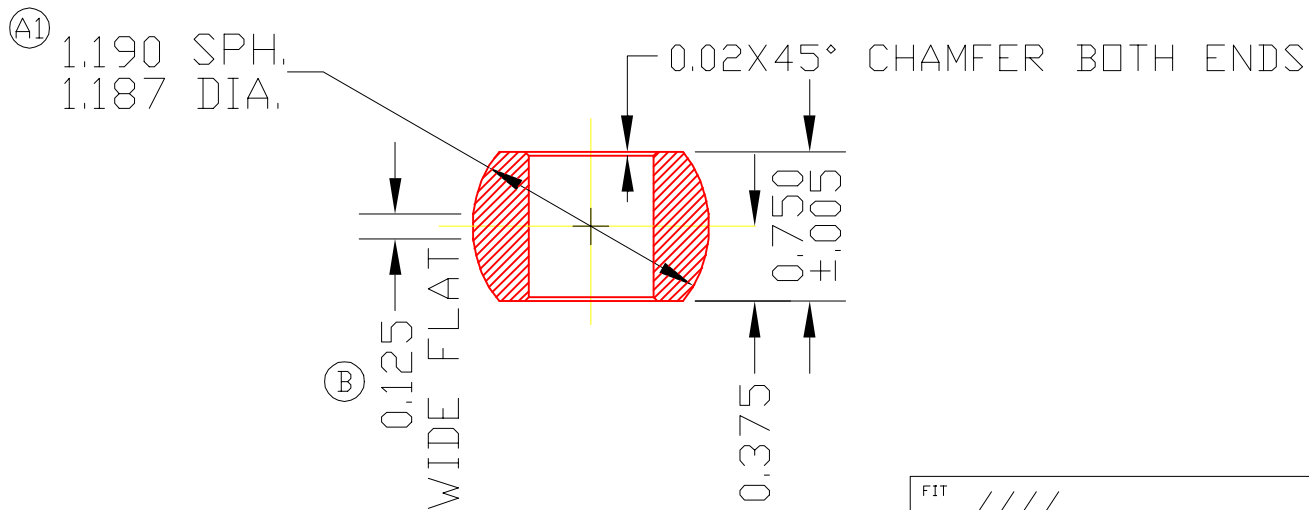


B10



③ MAT'L SAE 841 SINTERED BRONZE
IMPREGNATED WITH #30 TURBINE OIL
SLIGHT OIL FILM ALLOWABLE
MPIF CT-1000-K26



DET	PART NUMBER	DESCRIPTION	AMT
A	TRIANGLE MANUFACTURING CO. OSHKOSH, WI.		
	NAME BRG. BALL PM		
	USED IN B SERIES		
	DATE 1-28-64	PART NO.	
	DRAWN SP	B10	
	CHECKED SP		
	SCALE 1 / 1		

FIT	////
PLATING	////
MATERIAL	SEE NOTE*
ALL DIMS ±.02 UNLESS SPECIFIED	

CHANGE LEVEL
C 06-17-93